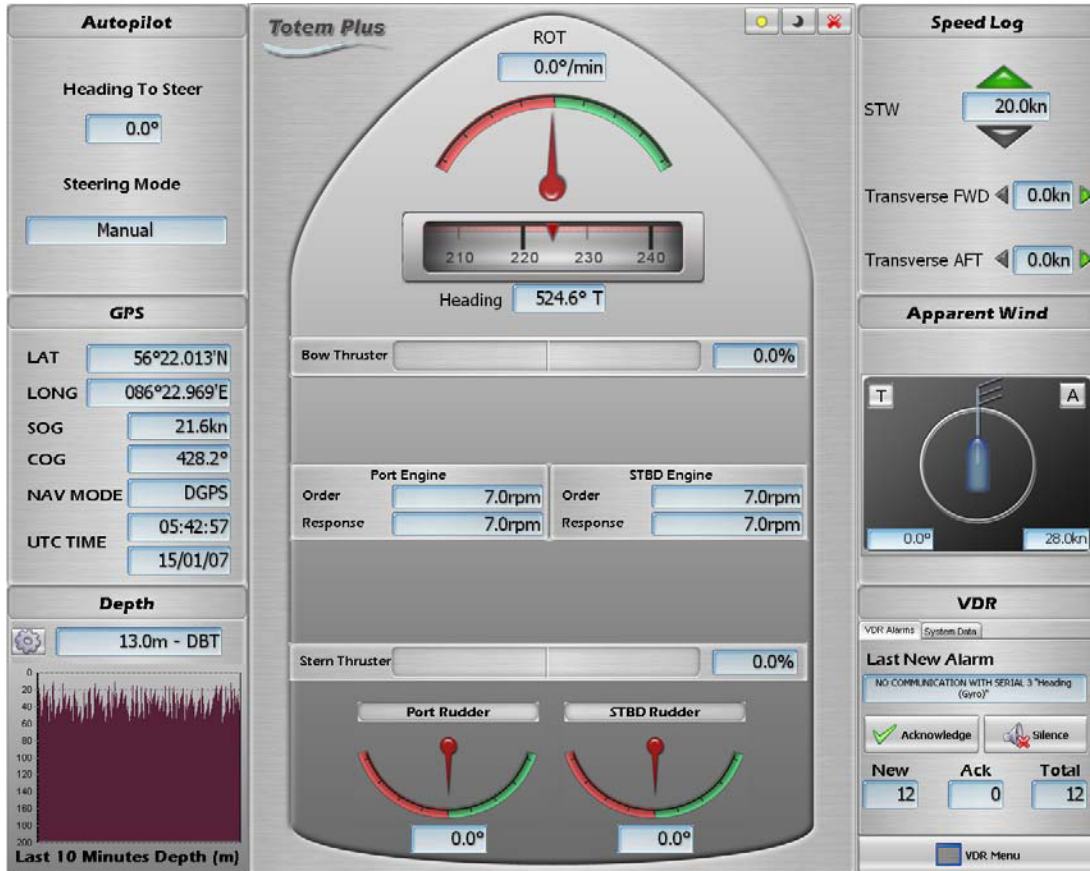


Totem Conning Display provides the information required for safe navigation and maneuvering from one central location. Totem Conning Display is a screen based information system and is available for any type of vessel. The data is presented in clear and efficient format, minimizing human errors.

Totem Conning Display is designed according to NAUT - OSV requirements for Conning Display.



The design of Totem Conning Display is configurable, and can be set according to owner's choice and preferences.

Status Information Display (example only)

- ◆ Rate of turn.
- ◆ Ship Heading.
- ◆ Rudder Angle
- ◆ Bow/ stern thrusters
- ◆ Main Engine- both order and response values are displayed.
- ◆ Position, Course and speed over ground
- ◆ Water Depth
- ◆ Apparent and Theoretical wind

Totem Conning Display can be integrated with Totem VDR or with Totem ECDIS as one system

Where Shipping Meets High-Tech