

# LOADMATE

## Stress, Stability & Planner

### LoadMate

is a modern, comprehensive Stress and Stability package. Designed by marine experts and written with the newest software tools, it is a powerful and at the same time very friendly program. Cargo planning is carried out with instant response to any change in loading or tank conditions. Stability criteria and stress analysis are calculated in accordance with Classification Societies requirements. Special features include stress optimization, draft survey, Bridge Visibility and more. **LoadMate** can run on any Windows PC system and can exchange information with other systems onboard or ashore.

**Tanker Main Screen**



**Bulk Carrier Main Screen**

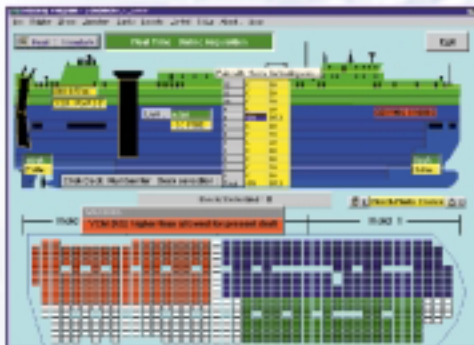
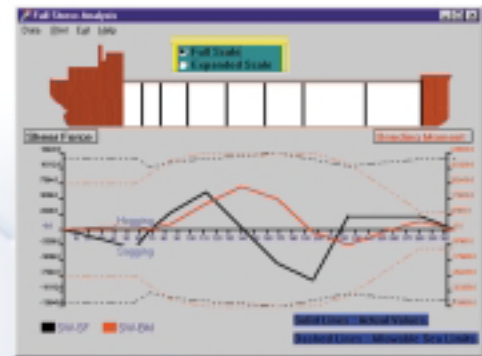


**Container Vessel Main Screen**

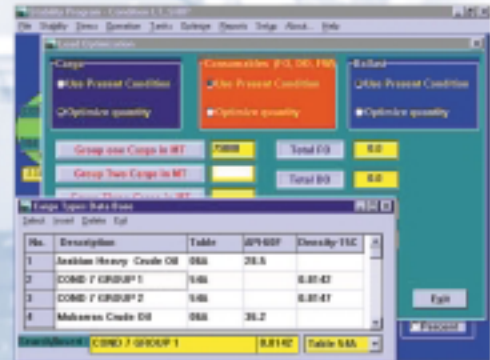
## System Features

- Separate modules for Tankers, Bulkers, Car Carriers or Container Ships.
- Full calculation of stability, draft and list criteria.
- Intact stability G'Z curves, curve analysis, wind effect or grain shifting.
- Shear forces and bending moments in graphical and textual forms.
- Torsional Analysis.
- Dynamical analysis – Stresses in Waves (optional).
- Data exchange with other systems (Tank Gauging Systems, Container Terminals (baplie) etc).
- Fast and friendly cargo and tanks planning tools.
- Warning messages (alarms) for out of bounds or abnormal loading conditions.
- Automatic cargo planning to minimize stress (Bulkers and Tankers).
- Visibility range from bridge and Air draft calculation.

### Full Stress Analysis



Car Carrier Main Screen



Load Optimization



Bay Screen

**Totem Plus** Ltd.  
Where shipping Meets High-Tech